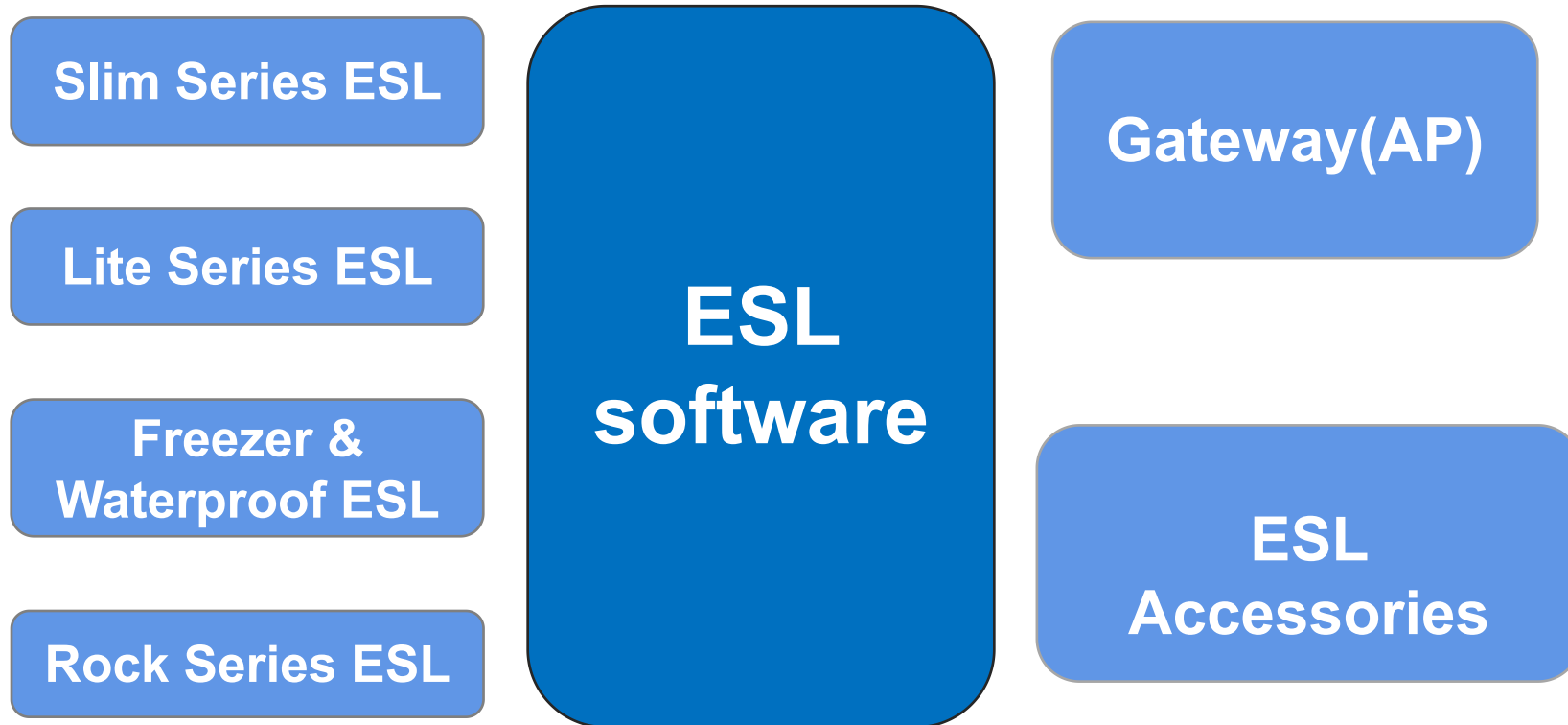




## YalaTech Product Data Sheet

ESLs | Gateway

# Total H/S solution for you



# YalaTech Electronic Shelf Label Product Lineup



Rock Series (3.5, 4.2, 5.83, 10.2inch)



Freezer & Waterproof (2.66, 4.2inch)



Slim Series (2.13, 2.66, 2.9, 4.2, 7.5inch)



Lite Series (1.54, 2.13, 2.66, 2.9, 4.2, 7.5inch)

# Lite Series ESL



- Simply design
- NFC optional
- Colorful cases customizable

1.54

2.13

2.66

2.90

4.2

7.5

# Slim Series ESL



- Slim design
- Super tough crash-proof protective cover for the display
- In-mould barcode label for long-lasting use
- 7 colors LED
- NFC optional

2.13

2.66

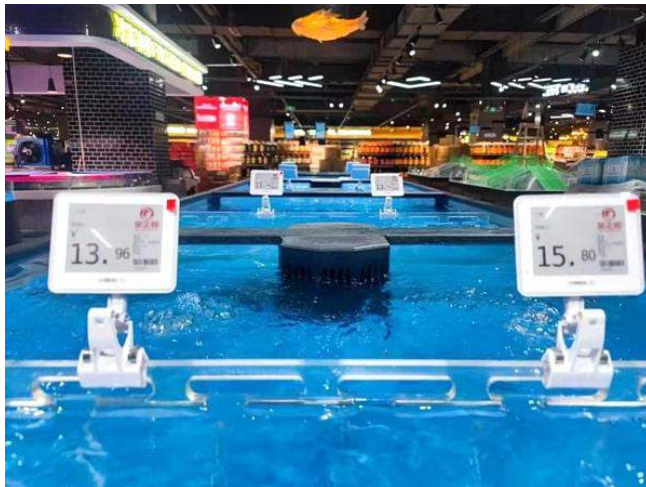
2.90

4.2

7.5



# Freezer and Waterproof ESL



- Super tough crash-proof protective cover for the display
- In-mould barcode label for long-lasting use
- IP 67 waterproof
- Work in -20°C low temperature environment
- 7 colors LED
- NFC optional
- lithium battery for longer endurance

2.66

4.2

# Rock Series ESL



- Super tough crash-proof protective cover for the display
- In-mould barcode label for long-lasting use
- IP 67 waterproof
- 7 colors LED
- NFC optional
- lithium battery for longer endurance

3.5

4.2

5.83

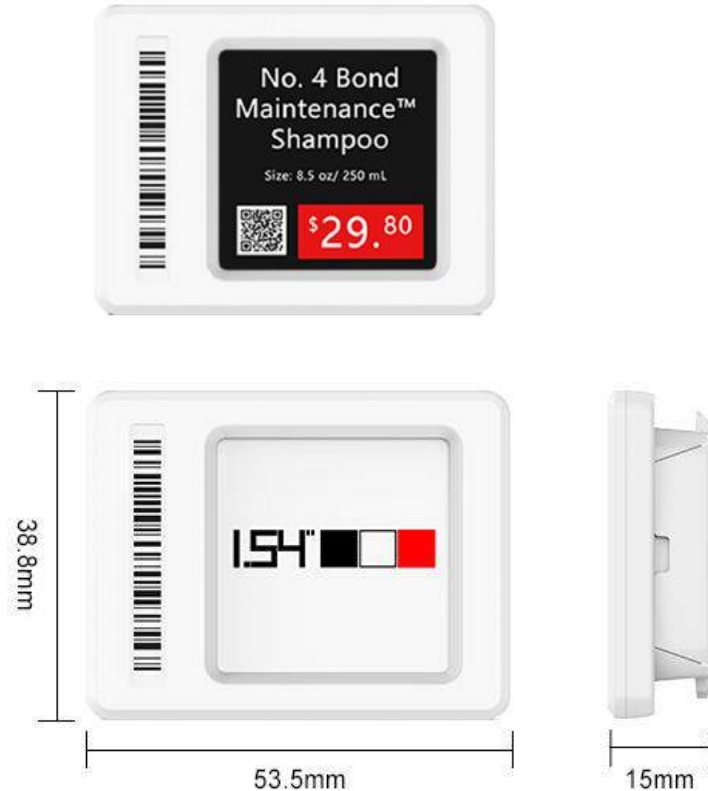
10.2



# Lite Series ESL

Model: YAL154

Minimal display: suitable for accessories, pharmaceuticals, perfumery, hygiene and beauty



1.54inch ESL

## Specifications

Dimension(mm): 53.5\*38.8\*15 / 2.1\*1.53\*0.59inch

Weight: 26 g

Temperature: from + 0 C° to + 40 C°

Updating time: up to 21.000 labels per hour

Ingress protection grade: IP53

LED indicator: none

## Display

Technology: e-ink bi-stable graphic

Active display area (mm): 26.9x26.9mm/1.54inch

Resolution: 200 × 200 pixel

DPI: 183

Pixel colors: BW/BWR/BWY

Visual angle: > 170°

## Battery

Battery: CR2450\*2ea

Battery capacity: 750mAh

Battery life: 5-10 years (2-4 updates per day)

Battery is removable: YES

# Lite Series ESL

Model: YAL213

Label with simple design. Perfect in every type of department.



2.13inch ESL

## Specifications

Dimension(mm): 72.8\*34.5\*13/ 2.86\*1.36\*0.51inch

Weight: 33 g

Temperature: from + 0 C° to + 40 C°

Updating time: up to 21.000 labels per hour

Ingress protection grade: IP53

LED indicator: none

## Display

Technology: e-ink bi-stable graphic

Active display area (mm): 48x23.1mm/2.13inch

Resolution: 250 × 122 pixel

DPI: 183

Pixel colors: BW/BWR/BWY

Visual angle: > 170°

## Battery

Battery: CR2450\*2ea

Battery capacity: 1200mAh

Battery life: 5-10 years (2-4 updates per day)

Battery is removable: YES

# Lite Series ESL

Model: YAL266

Label with simple design.

Perfect for texts and graphics visualization.



2.66inch ESL

## Specifications

Dimension(mm): 90.8×42.9\*13

Weight: 36 g

Temperature: from + 0 C° to + 40 C°

Updating time: up to 21.000 labels per hour

Ingress protection grade: IP53

LED indicator: none

## Display

Technology: e-ink bi-stable graphic

Active display area (mm): 59.5x30.1mm/2.66inch

Resolution: 296× 152 pixel

DPI: 183

Pixel colors: BW/BWR/BWY

Visual angle: > 170°

## Battery

Battery: CR2450\*2ea

Battery capacity: 1200mAh

Battery life: 5-10 years (2-4 updates per day)

Battery is removable: YES

# Slim Series ESL

Model: YAS213

Slim design with protective cover. Perfect in every type of department.



2.13inch ESL

## Specifications

Dimension(mm): 71\*34.5\*11.2/2.79\*1.36\*0.44 inch

Weight: 32 g

Temperature: from + 0 C° to + 40 C°

Updating time: up to 21.000 labels per hour

Ingress protection grade: IP54

LED indicator: 7 colors LED

## Display

Technology: e-ink bi-stable graphic

Active display area (mm): 48x23.1mm/2.13inch

Resolution: 250 × 122 pixel

DPI: 183

Pixel colors: BW/BWR/BWY

Visual angle: > 170°

## Battery

Battery: CR2450\*2ea

Battery capacity: 1200mAh

Battery life: 5-10 years (2-4 updates per day)

Battery is removable: YES

# Slim Series ESL

Model: YAS266

Slim design with protective cover. Perfect in every type of department.



2.66inch ESL

## Specifications

Dimension(mm): 90.7×42.8\*11.2

Weight: 38 g

Temperature: from + 0 C° to + 40 C°

Updating time: up to 21.000 labels per hour

Ingress protection grade: IP54

LED indicator: 7 colors LED

## Display

Technology: e-ink bi-stable graphic

Active display area (mm): 59.5x30.1mm/2.66inch

Resolution: 296 × 152 pixel

DPI: 183

Pixel colors: BW/BWR/BWY

Visual angle: > 170°

## Battery

Battery: CR2450\*2ea

Battery capacity: 1200mAh

Battery life: 5-10 years (2-4 updates per day)

Battery is removable: YES

# Slim Series ESL

Model: YAS29

Slim design with protective cover.

Perfect for texts and graphics visualization.



2.9inch ESL

## Specifications

Dimension(mm): 90\*42\*11.2 / 3.54\*1.65\*0.44inch

Weight: 39 g

Temperature: from + 0 C° to + 40 C°

Updating time: up to 21.000 labels per hour

Ingress protection grade: IP54

LED indicator: one color LED

## Display

Technology: e-ink bi-stable graphic

Active display area (mm): 66.3x28.5mm/2.9inch

Resolution: 296 × 128 pixel

DPI: 183

Pixel colors: BW/BWR/BWY

Visual angle: > 170°

## Battery

Battery: CR2450\*2ea

Battery capacity: 1200mAh

Battery life: 5-10 years (2-4 updates per day)

Battery is removable: YES



# Slim Series ESL

Model: YAS42

Perfect for promotion stand, fruit & vegetables and appliances section.



4.2inch ESL

## Specifications

Dimension(mm): 118\*83.8\*11.2 /4.65\*3.3\*0.44inch

Weight: 83 g

Temperature: from + 0 C° to + 40 C°

Updating time: up to 12.000 labels per hour

Ingress protection grade: IP54

LED indicator: 7 colors LED

## Display

Technology: e-ink bi-stable graphic

Active display area (mm): 84.2x63mm/4.2inch

Resolution: 400× 300 pixel

DPI: 183

Pixel colors: BW/BWR/BWY

Visual angle: > 170°

## Battery

Battery: CR2450\*3ea

Battery capacity: 1800mAh

Battery life: 5-10 years (2-4 updates per day)

Battery is removable: YES

# Slim Series ESL

Model: YAS75

Perfect for promotion stand, fruit & vegetables and appliances section.



7.5inch ESL

## Specifications

Dimension(mm): 183\*118\*11.2 / 7.2\*4.65\*0.44inch

Weight: 201 g

Temperature: from + 0 C° to + 40 C°

Updating time: up to 9000 labels per hour

Ingress protection grade: IP54

LED indicator: 7 colors LED

## Display

Technology: e-ink bi-stable graphic

Active display area (mm): 162.6x97.3mm/7.5inch

Resolution: 640 × 384 pixel

DPI: 183

Pixel colors: BW/BWR/BWY

Visual angle: > 170°

## Battery

Battery: CR2450\*4ea

Battery capacity: 2400mAh

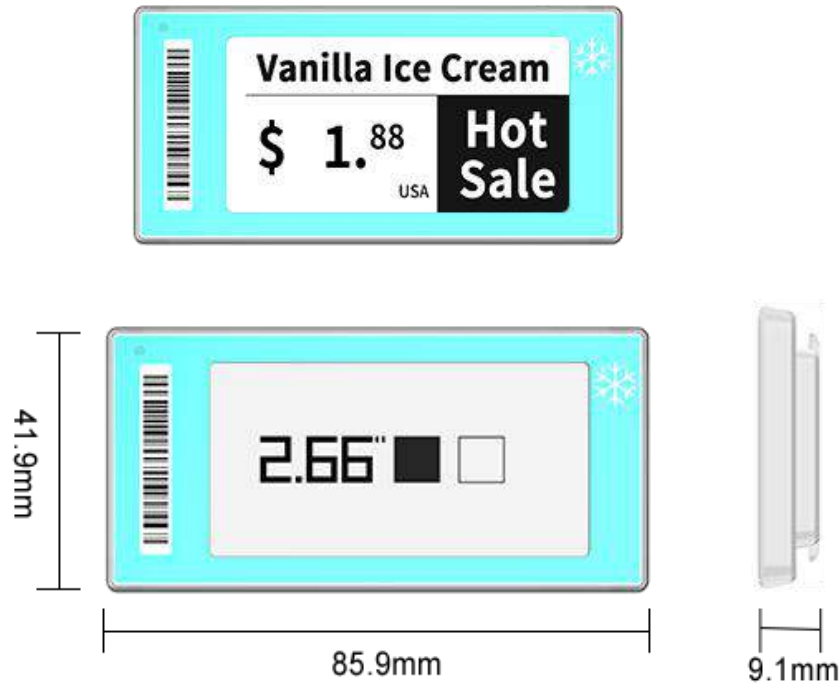
Battery life: 5-10 years (2-4 updates per day)

Battery is removable: YES

# Freezer ESL

Model: YAF266

Perfect to be used in freezers.



2.66inch ESL

## Specifications

Dimension(mm): 85.9\*41.9\*9.1

Weight: 28 g

Temperature: from -20 C°to 0 C°

Updating time: up to 21.000 labels per hour

Ingress protection grade: IP67

LED indicator: 7 colors LED

## Display

Technology: e-ink bi-stable graphic

Active display area (mm): 59.5x30.1mm/2.66inch

Resolution: 296 X 152 pixel

DPI: 183

Pixel colors: BW

Visual angle: > 170°

## Battery

Battery: Polymer battery

Battery capacity: 1200mAh

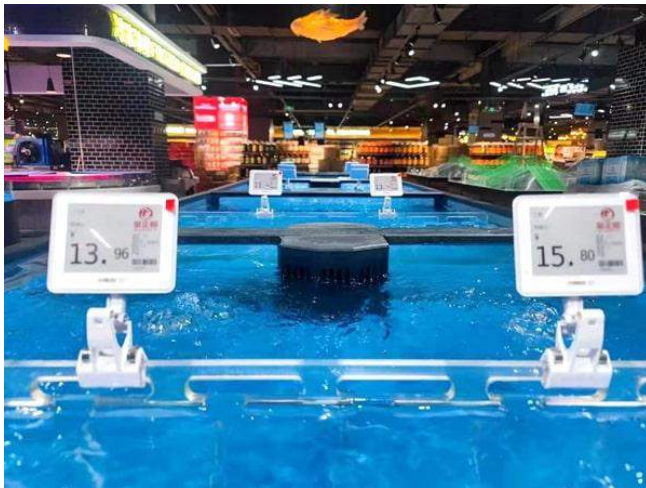
Battery life: 5-10 years (2-4 updates per day)

Battery is removable: no

# Waterproof ESL

Model: YAW42

Perfect to be used in wet area, such as sea food area



4.2inch ESL

## Specifications

Dimension(mm): 115.0×90.0×15

Weight: 83 g

Temperature: from 0~40°C

Updating time: up to 12.000 labels per hour

Ingress protection grade: IP67

LED indicator: 7 colors LED

## Display

Technology: e-ink bi-stable graphic

Active display area (mm): 84.2x63/4.2inch

Resolution: 400×300 pixel

DPI: 183

Pixel colors: BWR/BWY

Visual angle: > 170°

## Battery

Battery: Polymer battery

Battery capacity: 1800mAh

Battery life: 5-10 years (2-4 updates per day)

Battery is removable: no

# Rock Series ESL

Model: YAR35

Perfect for texts and graphics visualization.



3.5inch ESL

## Specifications

Dimension(mm): 99.5×50.0×12.9

Weight: 68 g

Temperature: from 0~40°C

Updating time: up to 18.000 labels per hour

Ingress protection grade: IP67

LED indicator: 7 colors LED

## Display

Technology: e-ink bi-stable graphic

Active display area (mm): 79.1x37.9/3.5inch

Resolution: 184× 384 pixel

DPI: 183

Pixel colors: BWR/BWY

Visual angle: > 170°

## Battery

Battery: Polymer battery

Battery capacity: 1100mAh

Battery life: 8-10 years (2-4 updates per day)

Battery is removable: yes

# Rock Series ESL

Model: YAR42

Perfect for promotion stand, fruit & vegetables and appliances section.



4.2inch ESL

## Specifications

Dimension(mm): 101.0×88.5×12.9

Weight: 89 g

Temperature: from 0~40°C

Updating time: up to 12.000 labels per hour

Ingress protection grade: IP67

LED indicator: 7 colors LED

## Display

Technology: e-ink bi-stable graphic

Active display area (mm): 84.2x63/4.2inch

Resolution: 400× 300 pixel

DPI: 183

Pixel colors: BWR/BWY

Visual angle: > 170°

## Battery

Battery: Polymer battery

Battery capacity: 1800mAh

Battery life: 8-10 years (2-4 updates per day)

Battery is removable: yes



# Rock Series ESL

Model: YAR58

Perfect for promotion stand, fruit & vegetables and appliances section.



5.83inch ESL

## Specifications

Dimension(mm): 136.0×112.1×12.9

Weight: 105 g

Temperature: from 0~40°C

Updating time: up to 8.000 labels per hour

Ingress protection grade: IP67

LED indicator: 7 colors LED

## Display

Technology: e-ink bi-stable graphic

Active display area (mm): 118.8x88.2 /5.83inch

Resolution: 648×480 pixel

DPI: 183

Pixel colors: BWR/BWY

Visual angle: > 170°

## Battery

Battery: Polymer battery

Battery capacity: 2200mAh

Battery life: 8-10 years (2-4 updates per day)

Battery is removable: yes

# Rock Series ESL

Model: YAR102

Perfect for promotion stand, fruit & vegetables and appliances section.



10.2 inch ESL

## Specifications

Dimension(mm): 234.6×170.7×12.9

Weight: 145 g

Temperature: from 0~40°C

Updating time: up to 8.000 labels per hour

Ingress protection grade: IP67

LED indicator: 7 colors LED

## Display

Technology: e-ink bi-stable graphic

Active display area (mm): 215.52\*143.86 /10.2inch

Resolution: 960×640 pixel

DPI: 183

Pixel colors: BWR/BWY

Visual angle: > 170°

## Battery

Battery: Polymer battery

Battery capacity: 4400mAh

Battery life: 8-10 years (2-4 updates per day)

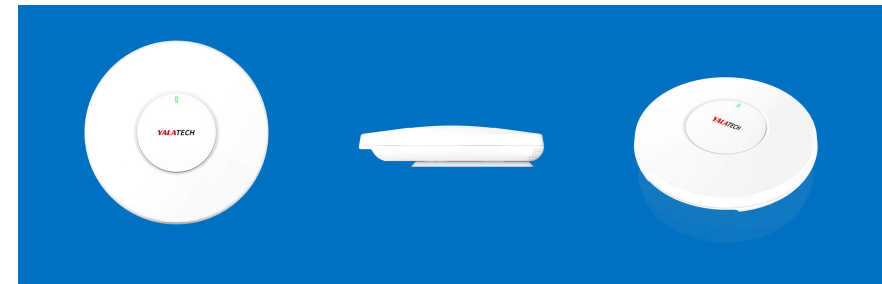
Battery is removable: yes

# ESL Gateway (Access Point)



## Features

- Communicate to ESL units automatically in the initial setting
- High-speed bi-directional communication
- Simple installation, plug & play
- High capacity and wide coverage



# Specifications of ESL Gateway

|                               |                                      |
|-------------------------------|--------------------------------------|
| Weight                        | 41.7g                                |
| Working voltage               | 4.8-5.5V                             |
| Communication Distance        | Indoor 30m radius, 2800 sqm coverage |
| No. of ESL per base station   | 5000pcs                              |
| Communication Frequency Range | 2.4Ghz                               |
| Communication Protocol        | Zigbee2.4G/TCP/IP                    |
| Communication Model           | bi-directional communication         |
| Transmitting power            | 20dbm                                |
| Power                         | DC                                   |
| Interface                     | DC-in, Ethernet port                 |
| Installation                  | support multiple approaches          |
| Operate Temperature           | -10 60                               |
| Working Humidity              | 10-90%RH                             |



To learn about how our Electronic Shelf Label solution can help your business, just contact us from below.

Email: [sales@yalatechnology.com](mailto:sales@yalatechnology.com)

Tel: 86-020-3117 7067

Website: [www.yalatechnology.com](http://www.yalatechnology.com)